

 3  1  2

O
|
H



Trevelyan Court, *Windsor*

OSBORNE HEATH

A three double bedroom, two bathroom apartment located in a secure gated development with allocated parking.

This newly renovated ground floor apartment has a living room, kitchen, three double bedrooms, one with en suite, and a bathroom.

Outside there is secure gated parking and landscaped gardens.

Trevelyan Court is walkable to Windsor town centre. Windsor has a wide range of shops and restaurants as well as Windsor Castle, Windsor Great Park, Windsor Racecourse and Legoland. Nearby train stations include Windsor & Eton Central and Windsor & Eton Riverside where trains run to London Paddington (via Slough) and London Waterloo. Windsor is also convenient for the M4, M25 and Heathrow Airport and the area is served by a number of well-regarded state, private and international schools.

EPC rating C. Council Tax band E. Deposit £2,653. Holding Deposit £530. Lease Length 6-36 months.

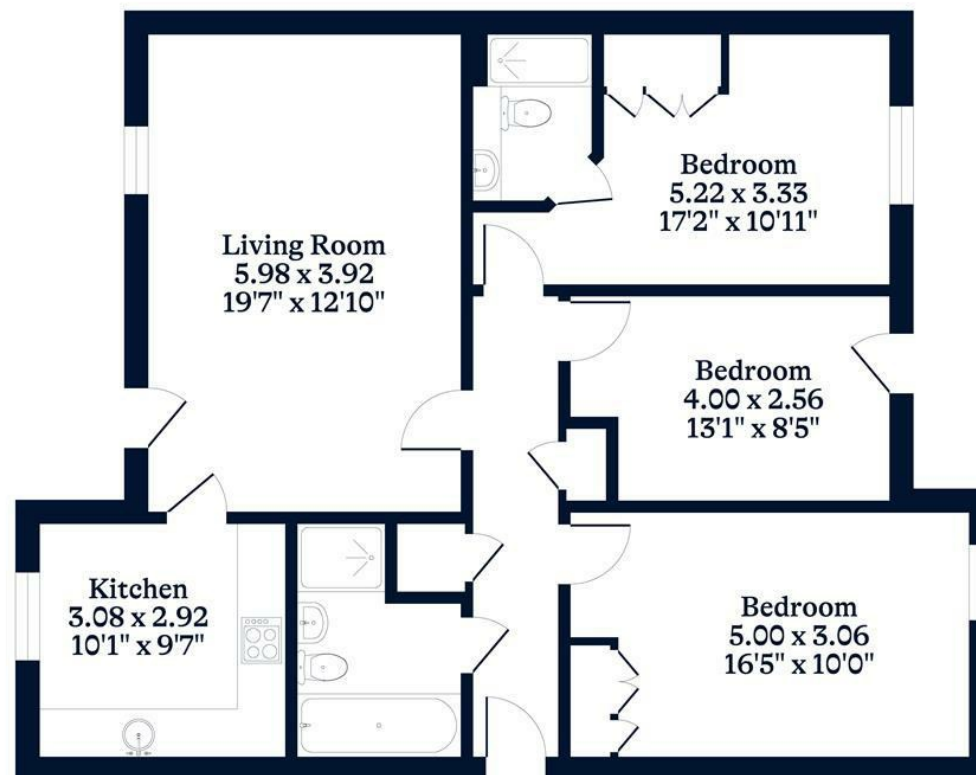




APPROXIMATE FLOOR AREA
Apartment - 91.10 sq m - 981 sq ft
(Gross Internal Area)



NOT TO SCALE
This plan is for illustration purposes only



Ground Floor

This plan is for layout guidance only. Not drawn to scale unless stated. Windows and door openings are approximate. Whilst every care is taken in the preparation of this plan, please check all dimensions, shapes and compass bearings before making any decisions reliant upon them.

OSBORNEHEATH.CO.UK